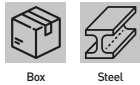


**0036-**
**STEEL VICE**

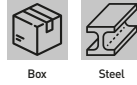
Lateral sliding adjustment.



Art.	Jaws	Opening	Working height	Slot distance	Net weight
0036/100	100 mm	105 mm	60 mm	85 mm	4,9 kg
0036/125	125 mm	138 mm	75 mm	110 mm	9,5 kg
0036/150	150 mm	180 mm	90 mm	150 mm	19 kg

**0036-xG**
**TABLE VICE WITH SWIVEL BASE**

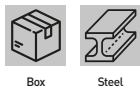
Lateral sliding adjustment. Equipped with swivel mechanism.



Art.	Jaws	Opening	Net weight
0036/100G	100 mm	105 mm	5,5 kg
0036/125G	125 mm	124 mm	11 kg
0036/150G	150 mm	180 mm	22 kg

**0135-**
**FORGED STEEL VICE**

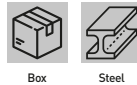
Lateral sliding adjustment.



Art.	Jaws	Opening	Working height	Slot distance	Net weight
0135/100	100 mm	125 mm	60 mm	98 mm	5,8 kg
0135/125	125 mm	160 mm	70 mm	111 mm	9,8 kg
0135/150	150 mm	190 mm	85 mm	136 mm	17,8 kg

**0140-**
**STEEL VICE**

Lateral sliding adjustment. Equipped with hose clamp. Recommended for heavy use.



Art.	Jaws	Opening	Working height	Slot distance	Net weight
0140/080	80 mm	80 mm	60 mm	80 mm	4 kg
0140/100	100 mm	100 mm	65 mm	80 mm	5,5 kg
0140/125	125 mm	125 mm	90 mm	100 mm	10 kg
0140/150	150 mm	150 mm	95 mm	125 mm	14 kg

**0591-**
**STEEL VICE**

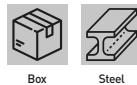
Lateral sliding adjustment. Equipped with bearing on the screw, hose clamp and interchangeable jaws.



Art.	Jaws	Opening	Net weight
0591/100	100 mm	95 mm	5,3 kg
0591/125	125 mm	130 mm	11 kg

**0145-**
**STEEL VICE**

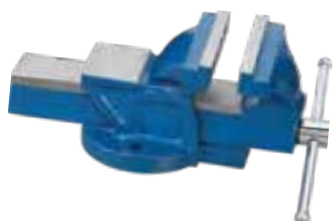
Equipped with hose clamp.



Art.	Jaws	Opening	Working height	Slot distance	Net weight
0145/80	80 x 20 mm	80 mm	58 mm	80 mm	3,7 kg
0145/100	100 x 20 mm	100 mm	70 mm	80 mm	5,2 kg
0145/125	125 x 20 mm	125 mm	75 mm	100 mm	7,4 kg
0145/150	150 x 27 mm	150 mm	95 mm	120 mm	12 kg

**0174-**
**SG IRON BENCH VICE**

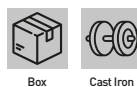
Equipped with interchangeable jaws.



Art.	Jaws	Opening	Working height	Slot distance	Net weight
0174/100	100 x 20 mm	100 mm	50 mm	85 mm	4,8 kg
0174/125	125 x 22 mm	130 mm	60 mm	95 mm	7,7 kg
0174/150	150 x 22 mm	150 mm	60 mm	105 mm	10 kg

**0427-**
**SG IRON PARALLEL BENCH VICE**

Attaches directly to the work base to ensure high stability. Equipped with interchangeable jaws and prismatic guides.



Art.	Jaws	Opening	Net weight
0427/080	80 mm	80 mm	6,5 kg
0427/100	100 mm	100 mm	10 kg
0427/125	135 mm	125 mm	12 kg

**0146/60**

**STEEL VICE WITH SWIVEL BASE**



Cast Iron

Jaws	60 mm
Opening	60 mm
Clamp capacity	51 mm
Net weight	1,5 kg

**0042-**

**ALUMINUM MAGNETIC JAW COUPLE**

Ribbed with grooves.



2 Pcs

Alu

Aluminum

Art.	Jaws	Height	Thickness
0042/100	100 mm	28 mm	7.5 mm
0042/125	125 mm	28.5 mm	7.5 mm
0042/150	150 mm	28.5 mm	7.5 mm

**0520-xG**

**ALUMINIUM MAGNETIC JAW PAIR WITH RUBBER FACE**

With durable rubber.



2 Pcs



Blister

Alu

Aluminum

Art.	Length	Height	Thickness
0520/100G	100 mm	28,7 mm	10,0 mm
0520/125G	125 mm	28,7 mm	10,0 mm
0520/150G	150 mm	28,7 mm	10,0 mm

**0520-xA**

**ALUMINIUM MAGNETIC JAW PAIR**

Ribbed with grooves.



2 Pcs



Blister

Alu

Aluminum

Art.	Length	Height	Thickness
0520/100A	100 mm	28,3 mm	8,9 mm
0520/125A	125 mm	28,3 mm	8,9 mm
0520/150A	150 mm	28,3 mm	8,9 mm

**0520-xP**

**PRISMATIC MAGNETIC JAW PAIR**

With trapezoidal jaws.



2 Pcs



Blister

Alu

Aluminum

Art.	Length	Height	Thickness
0520/100P	100 mm	28,5 mm	9,8 mm
0520/125P	125 mm	28,5 mm	9,8 mm
0520/150P	150 mm	28,5 mm	9,8 mm

**0520-xF**

**MAGNETIC JAW PAIR WITH FIBER FACE**

With strong fiber.



2 Pcs



Blister

Alu

Aluminum

Art.	Length	Height	Thickness
0520/100F	100 mm	28,7 mm	10,3 mm
0520/125F	125 mm	28,7 mm	10,3 mm
0520/150F	150 mm	28,7 mm	10,3 mm

**0520-xS**

**SERIES OF ALUMINIUM MAGNETIC JAW PAIRS**

Includes the items 0520-xA, 0520-xF, 0520-xG, 0520-xP.



8 Pcs



Blister

Alu

Aluminum

Art.	Length
0520/100S	100 mm
0520/125S	125 mm
0520/150S	150 mm

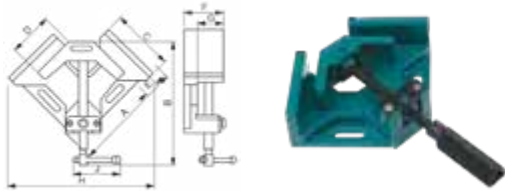


**0205**
**SPECIAL VICE FOR 90° WELDING**

Adjustable jaw.


**Alu**

Aluminum



Capacity	70 mm + 70 mm
Working height	35 mm
A	150 mm
B	Min 250 mm - Max 345 mm
C	97 mm
D	60 mm
E	70 mm
F	55 mm
G	49 mm
H	217 mm
J	92 mm

**0205/120**
**SPECIAL VICE FOR 90° WELDING**

Adjustable jaw.



Box

Cast Iron



Capacity	110 mm + 110 mm
Working height	60 mm
A	257 mm
B	Min 290 mm - Max 458 mm
C	135 mm
D	109 mm
E	126 mm
F	90 mm
G	77 mm
H	340 mm
J	112 mm

**M006-**
**GENERAL USE STEEL CLAMP WITH T-SPINDLE**


Steel

Tempered



Art.	Span x Depth	Spindle	Maximum torque
M006/200	200 x 120 mm	22 x 10,5 mm	550 kg
M006/300	300 x 140 mm	25 x 12 mm	600 kg
M006/400	420 x 120 mm	25 x 12 mm	650 kg
M006/500	500 x 120 mm	25 x 12 mm	650 kg
M006/600	600 x 120 mm	25 x 12 mm	650 kg
M006/800	800 x 120 mm	25 x 12 mm	650 kg
M006/1000	1000 x 120 mm	25 x 12 mm	650 kg

**M007-**
**GENERAL USE STEEL CLAMP RATCHET**

Quick clamping.



Steel

Tempered

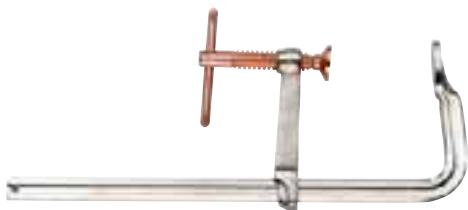


Art.	Span x Depth	Spindle
M007/250	250 x 120 mm	22 x 10,5 mm
M007/300	300 x 140 mm	25 x 12 mm
M007/400	400 x 120 mm	25 x 12 mm
M007/500	500 x 120 mm	25 x 12 mm
M007/600	600 x 120 mm	25 x 12 mm

**M018-**
**GENERAL USE STEEL CLAMP WITH T-SPINDLE**


Steel

Tempered



Art.	Span x Depth	Spindle
M018/0200	200 x 100 mm	19 x 9,5 mm
M018/0300	300 x 100 mm	19 x 9,5 mm
M018/0400	400 x 120 mm	21,5 x 10,5 mm
M018/0500	500 x 120 mm	21,5 x 10,5 mm
M018/0600	600 x 120 mm	21,5 x 10,5 mm
M018/0800	800 x 120 mm	21,5 x 10,5 mm
M018/1000	1000 x 120 mm	21,5 x 10,5 mm
M018/1200	1200 x 120 mm	21,5 x 10,5 mm

**0167-**
**WOOD HANDLE CLAMP**

**Alu**

Steel

Aluminum



Art.	Span x Depth
0167/150	150 x 50 mm
0167/200	200 x 80 mm
0167/250	250 x 100 mm
0167/400	400 x 100 mm
0167/500	500 x 120 mm

**0394-**  
**QUICK ADJUSTABLE CLAMP**



**ABS**

Art.	Span x Depth	Spindle	Maximum torque
0394/150	150 x 63 mm	18 x 5,5 mm	60 kg
0394/300	300 x 63 mm	18 x 5,5 mm	60 kg
0394/450	450 x 63 mm	18 x 5,5 mm	60 kg
0394/600	600 x 63 mm	18 x 5,5 mm	60 kg

**0353/085**  
**POLYPROPYLENE SPRING CLAMPS SET**

Length 85 mm, useful in the laboratory to facilitate the gluings and similar works.



12 Pcs  
 Hangable  
 PP  
Polyprop.

Length	85 mm
Opening	35 mm

**035x**  
**SPRING CLAMP**

Useful in the laboratory to facilitate the gluings and similar works.



Hangable  
 Nylon

Art.	Length	Opening
0353/150	150 mm	55 mm
0354/225	225 mm	100 mm

**0250**  
**4-WAY CLAMPING SYSTEM**

Provided in assembly kit, for doors or wooden tables (wood strips not included).



Box  
 Plastic

Max thickness	150 mm
---------------	--------

**0353/110**  
**POLYPROPYLENE SPRING CLAMPS SET**

110 mm long, useful in the laboratory to facilitate the gluings and similar works.



8 Pcs  
 Hangable  
 PP  
Polyprop.

Length	110 mm
Opening	40 mm

**0265/05**  
**CAST IRON ANVIL**

Sturdy construction, round hole and square hole for punching and bending

Box  
 Cast Iron

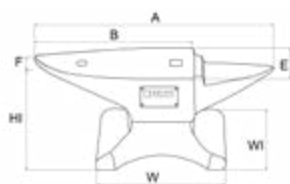


A	230 mm	WI	85 mm
B	160 mm	HI	95 mm
E	57 mm	Tolerance	±5%
F	10,5 mm	Net weight	5 kg
W	112 mm		

**0157-**  
**C50 HARDENED STEEL ANVIL**

Sturdy construction, round hole and square hole for punching and bending.

Box  
 C50



Art.	A	B	E	W	WI	HI	Tolerance	Net weight
0157/10	345 mm	235 mm	80 mm	150 mm	100 mm	120 mm	±5%	10 kg
0157/30	535 mm	360 mm	110 mm	215 mm	150 mm	160 mm	±5%	30 kg
0157/50	620 mm	410 mm	140 mm	240 mm	175 mm	190 mm	±5%	50 kg
0157/100	805 mm	520 mm	175 mm	315 mm	230 mm	240 mm	±5%	100 kg